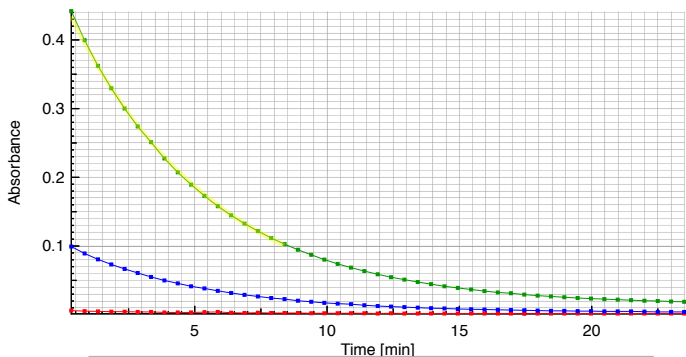


Absorbance versus time



| Function | r2 | Chi-2 | rmsd |
|--|----------|-----------|------------|
| $f(x) = \frac{0.4614}{e^{0.1812x}}$ | 0.999590 | 0.0002946 | 4.671e-13 |
| $f(x) = 0.003944x^2 - 0.07495x + 0.4589$ | 0.998923 | 0.0008783 | 4.279e-11 |
| $f(x) = 0.4077 - 0.04051x$ | 0.955284 | 0.03919 | 8.649e-8 |
| $f(x) = 0.03027x$ | 0.955284 | 2.285 | 0.00003... |
| $f(x) = \frac{0.3762}{x^{0.4844}}$ | 0.804732 | 0.1524 | 5.979e-8 |
| $f(x) = 0.003346x^2$ | 0.804532 | 2.801 | 0.00001... |
| $f(x) = 0.2395x^{-1}$ | 0.608380 | 1.649 | 0.00000... |
| $f(x) = 0.1736 + 0.1179x^{-1}$ | 0.608380 | 0.3440 | 0.00000... |
| $f(x) = 0.06150x^{-2}$ | 0.379246 | 3.163 | 0.00000... |
| $f(x) = 0.2096 + 0.03064x^{-2}$ | 0.379246 | 0.5584 | 0.00000... |